

# Quick Guide

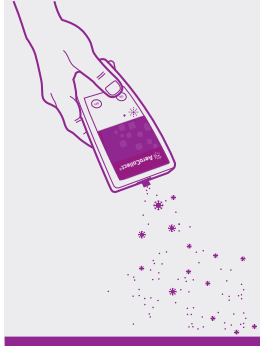
## Pigs



### Step 1

#### Insert the sample chamber

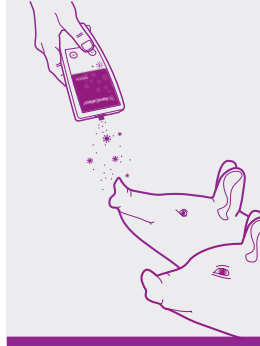
Insert the sample chamber in the direction indicated by the arrow.



### Step 2

#### Start! Press ON (green)

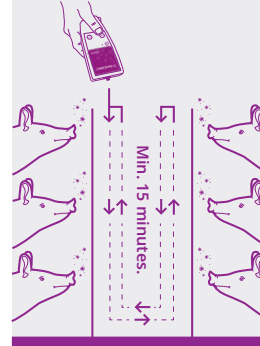
The instrument can be started by pushing the green ON-button.



### Step 3

#### Collect close to the pigs

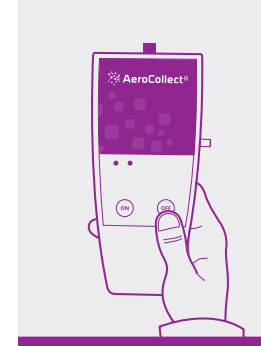
Collect the sample as close to the pigs as possible. If the pigs are curious, let them breathe into the sample chamber.



### Step 4

#### Sampling from entire section

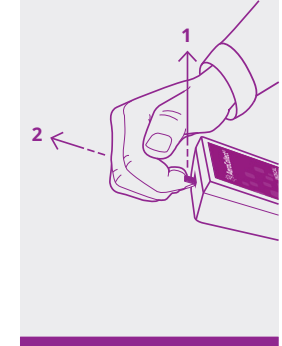
Walk along the pens while pointing the AeroCollect® towards the pigs. Samples should be collected for a minimum of 15 minutes in each section.



### Step 5

#### Stop! Press OFF (red)

The sampling procedure is stopped by pressing the red OFF-button.



### Step 6

#### Remove the sample chamber

Lift up (1) the front of the sample chamber while pulling it out (2) of the AeroCollect®.





Watch how to use AeroCollect®  
Scan the QR code with the camera on your phone



# Quick Guide

## Pigs

